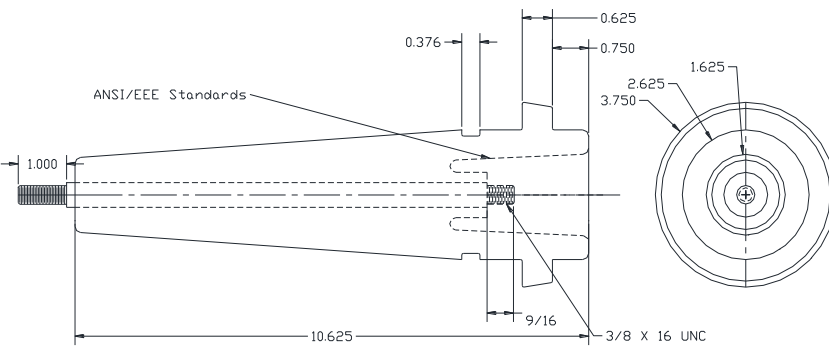
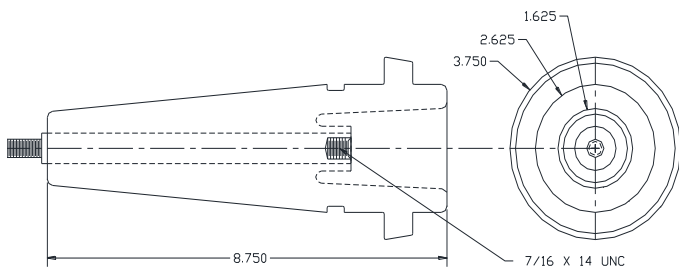


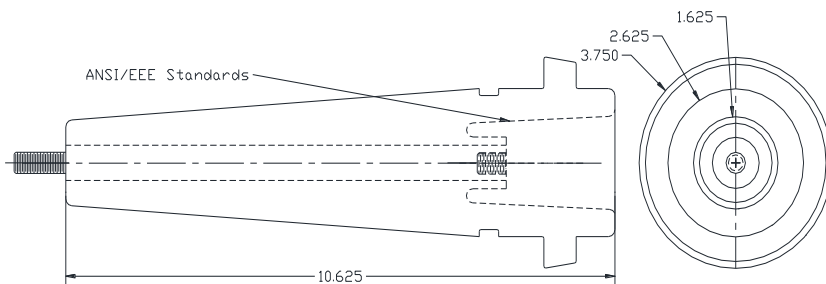
**15kV Cavity/Well bushing  
600 Amps 95 kV B.I.L.**



**25 kV Cavity/Well bushing  
600 Amps 125 kV B.I.L.**



**15 kV Cavity/Well bushing  
800 Amps, 95 B.I.L. Removable Insert  
Allows for replacement of damaged  
thread without the need to open the  
transformer**



**25 kV Cavity/Well Bushing  
800 Amps 125 kV B.I.L.  
Removable insert**

